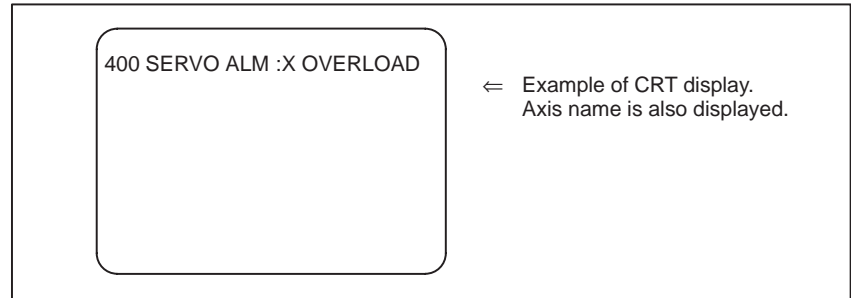


**6.16**  
**ALARM 400, 402, 406,**  
**490 (OVERLOAD)**

Amplifier or overheat of motor is detected.



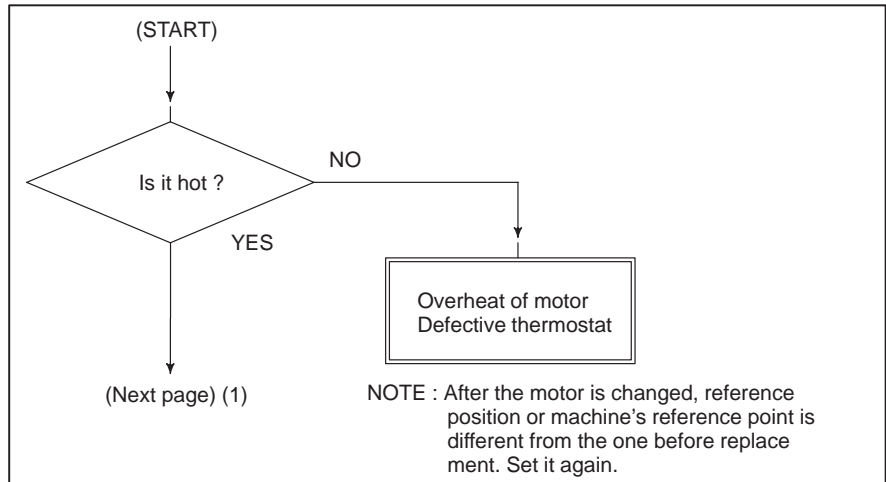
**Points**

Confirm the detail by the diagnostic function of CNC.

		#7	#6	#5	#4	#3	#2	#1	#0
DGN	0720	OVL							
	:								
DGN	0727	OVL							

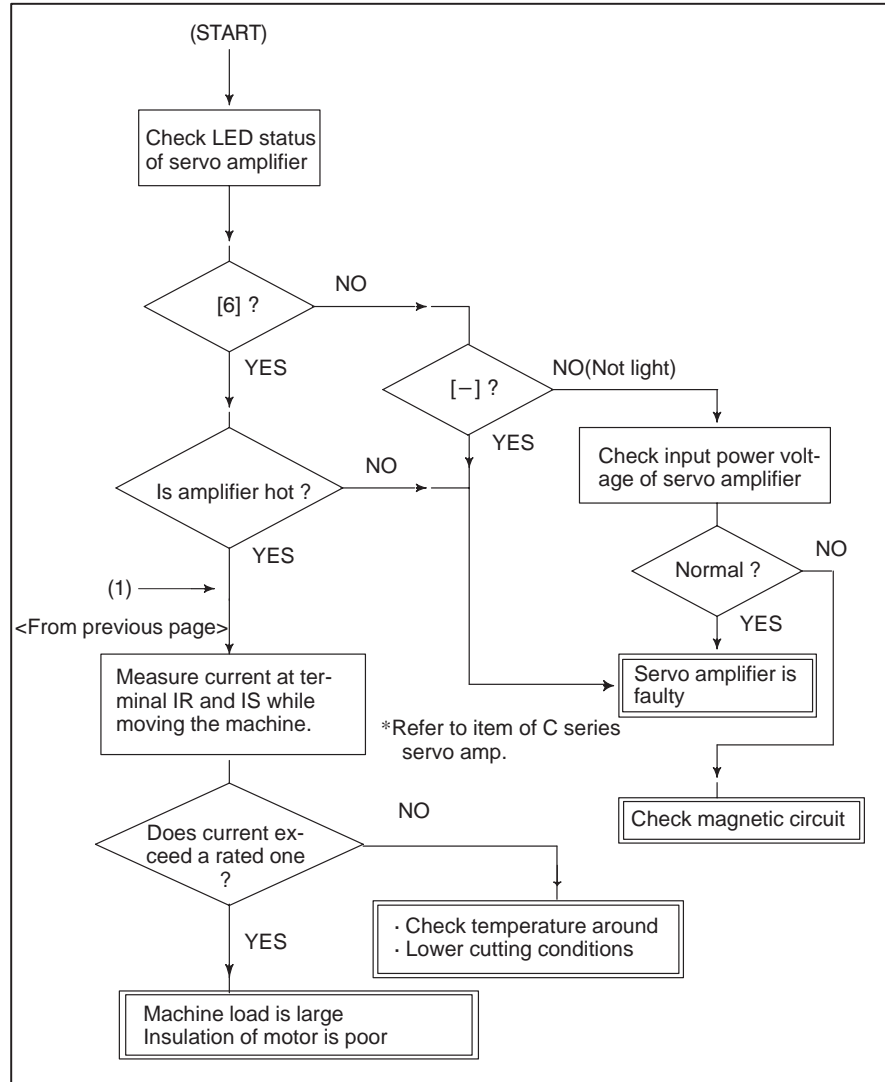
#7(OVL): 1 OVERLOAD ALARM is displayed.

**Overheat of servo motor**



● Overheat of servo amplifier

LED 6 of servo amplifier is lit



● Overheat of  $\alpha$  series power supply module

