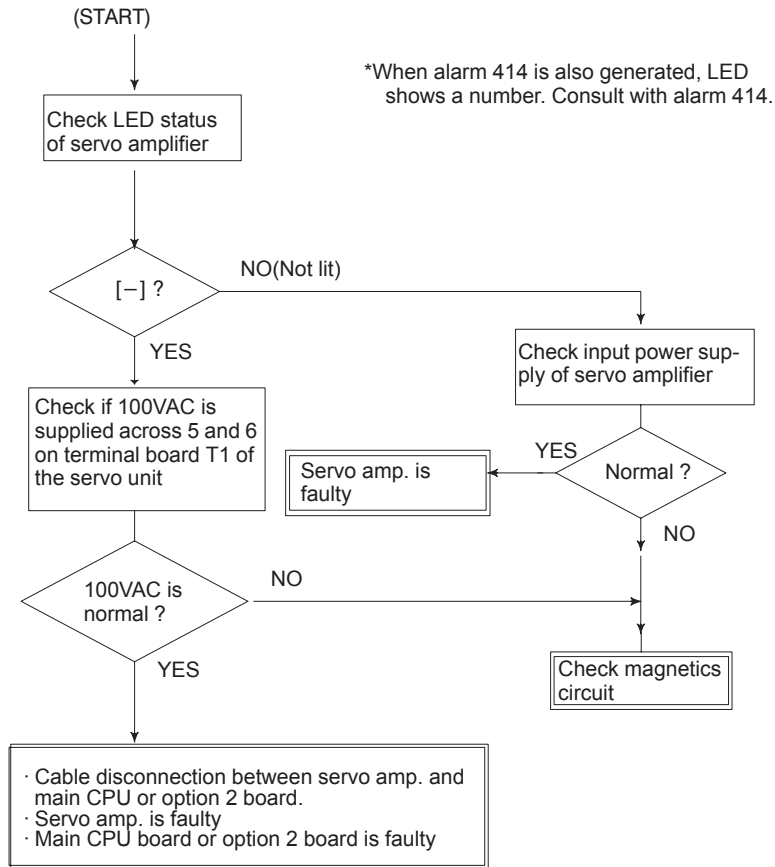


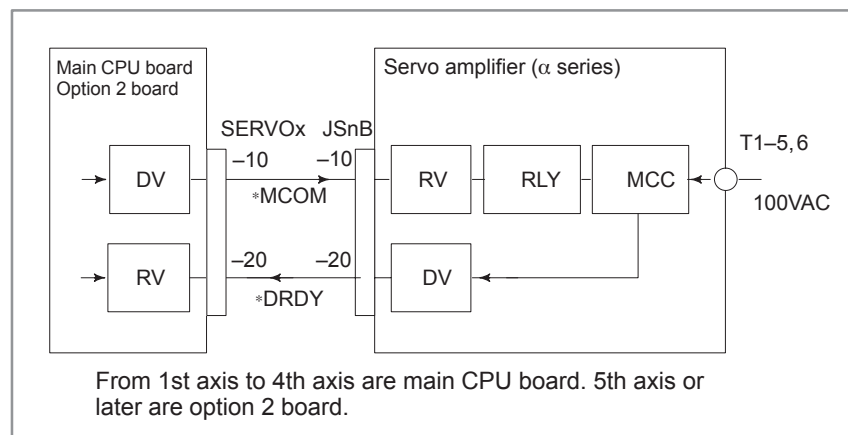
8.18 ALARM 401 (*DRDY SIGNAL TURNED OFF)

Ready signal (*DRDY) of servo amplifier is not turned on or turned off during operation.



CAUTION

When the main CPU board is replaced, all the data stored in memory is lost. Set NC data again, referring to chapter 3. "Data input/output" .



Power on sequence (NC⇔Servo amplifier)

